

LUGNA

FORM & FUNCTION

ASSEMBLY INSTRUCTIONS

Built-In Pack Drawer

| HEIGHT | WIDTH | DEPTH |
|--------|-------|-------|
| 198mm | 412mm | 409mm |



LUGNA understands the importance of timeless style and practical durability for a home's form and function. Our European-inspired collection is simple and easy to use, with five modern colours that complement any style and space. LUGNA's modular system allows for endless configurations and additions, with various-sized cabinets, drawers, shelving, and hinged doors that can be combined to create a bespoke look on any budget. Whether you're looking for something modern and sleek or classic and elegant, LUGNA has something for everyone.




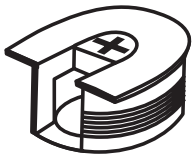
SCAN for
more info


10 YEAR
WARRANTY




Includes

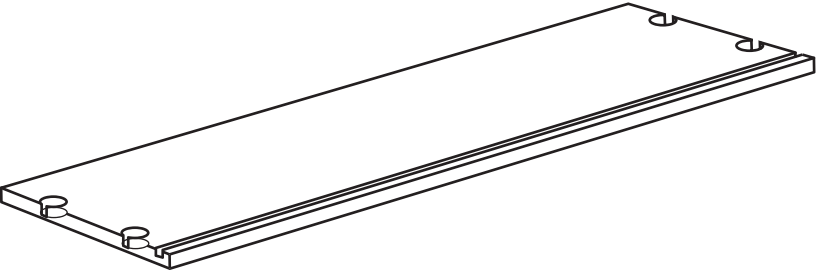
- 

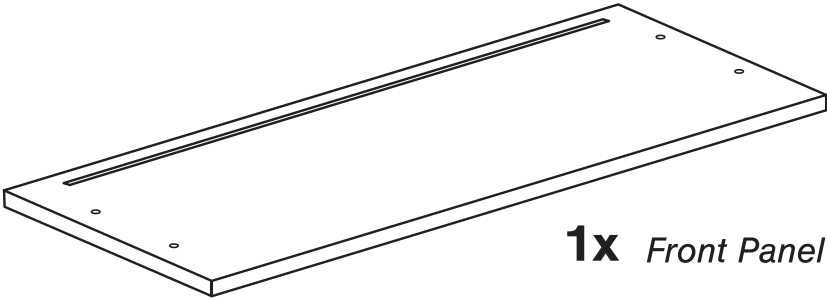
8x
Cam Lock Screws
- 

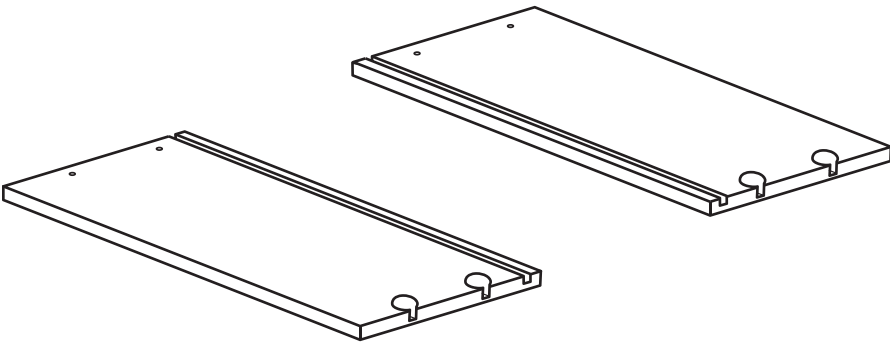
8x
Cam Lock Nuts
- 

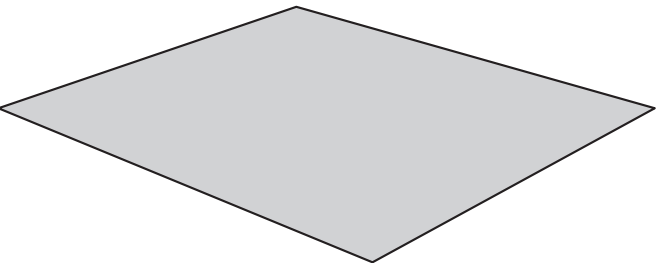
4x
Screws
- 

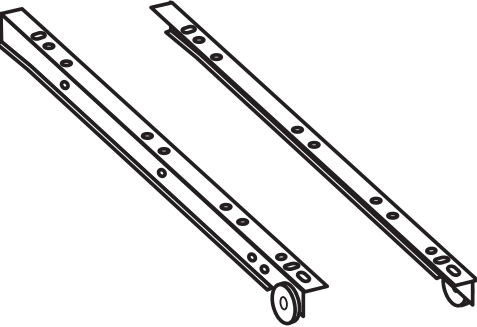
4x
Euro Screw

- 

1x Back Panel
- 

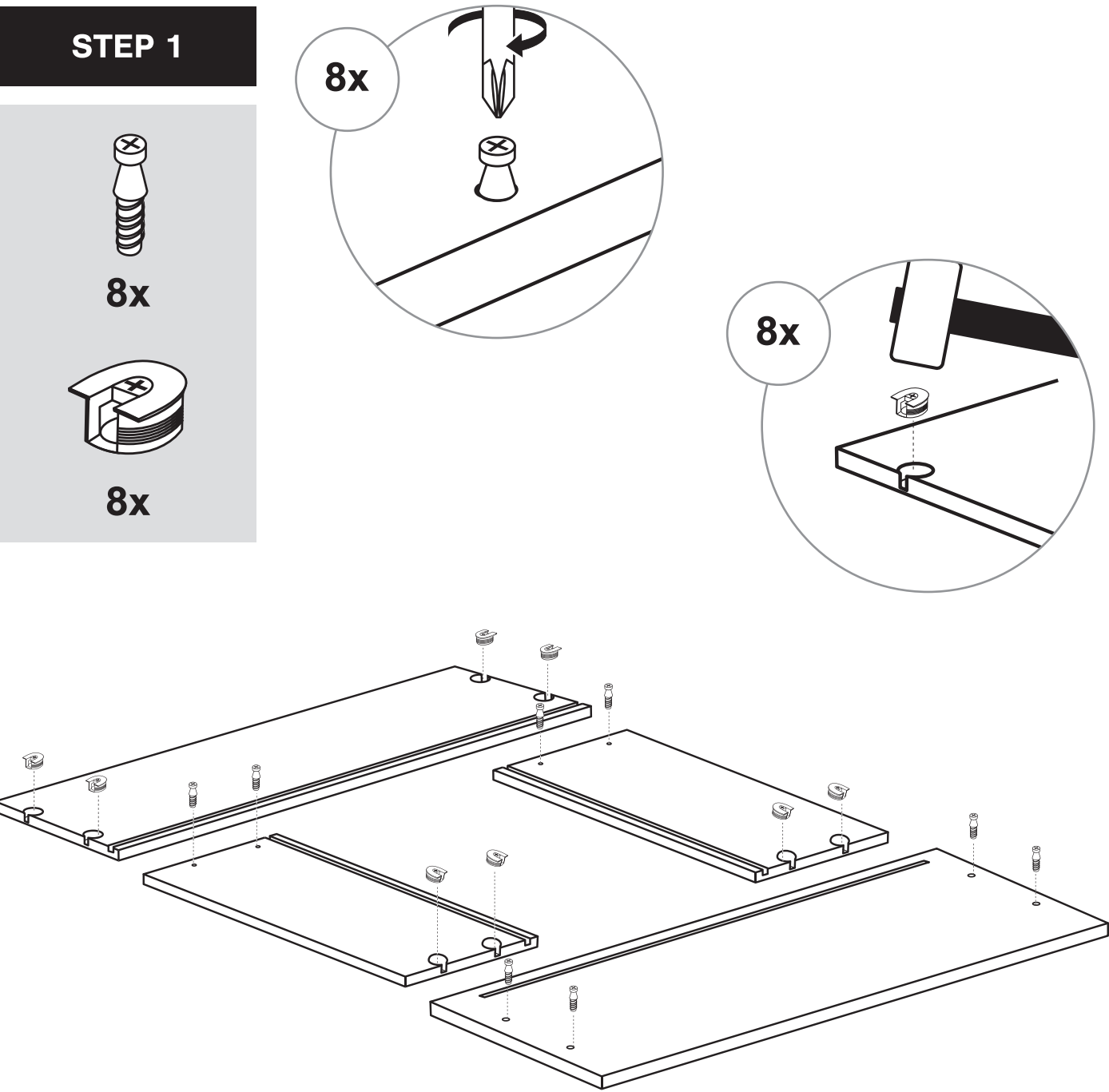
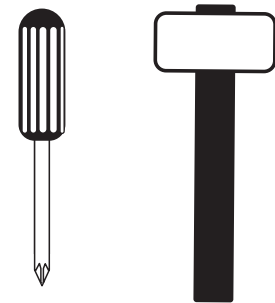
1x Front Panel
- 

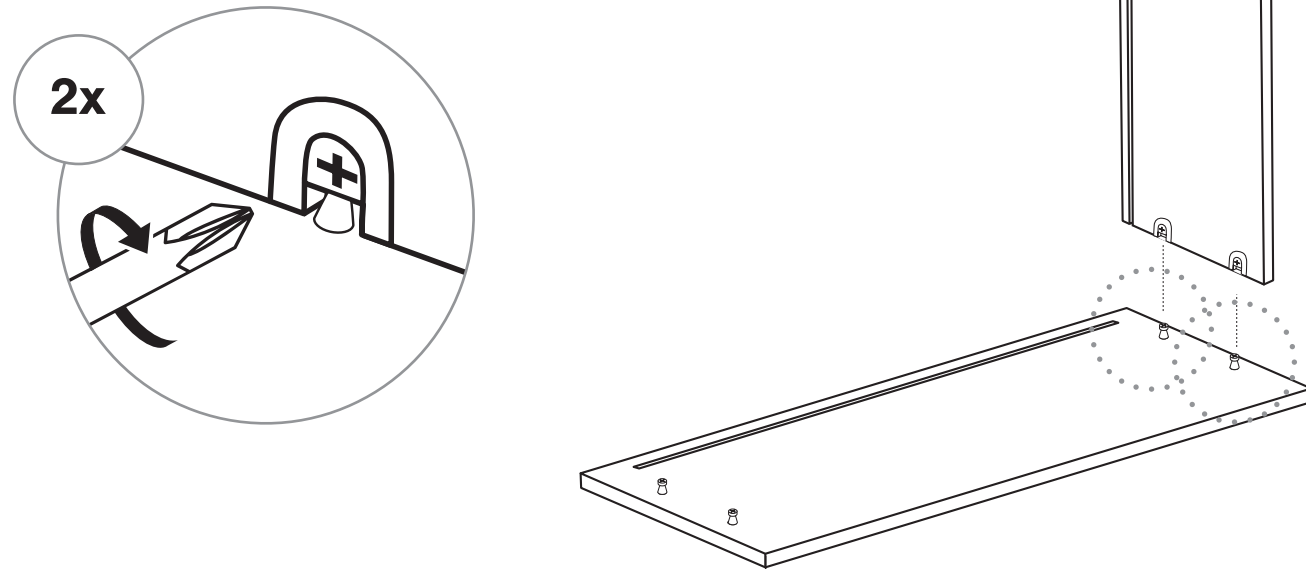
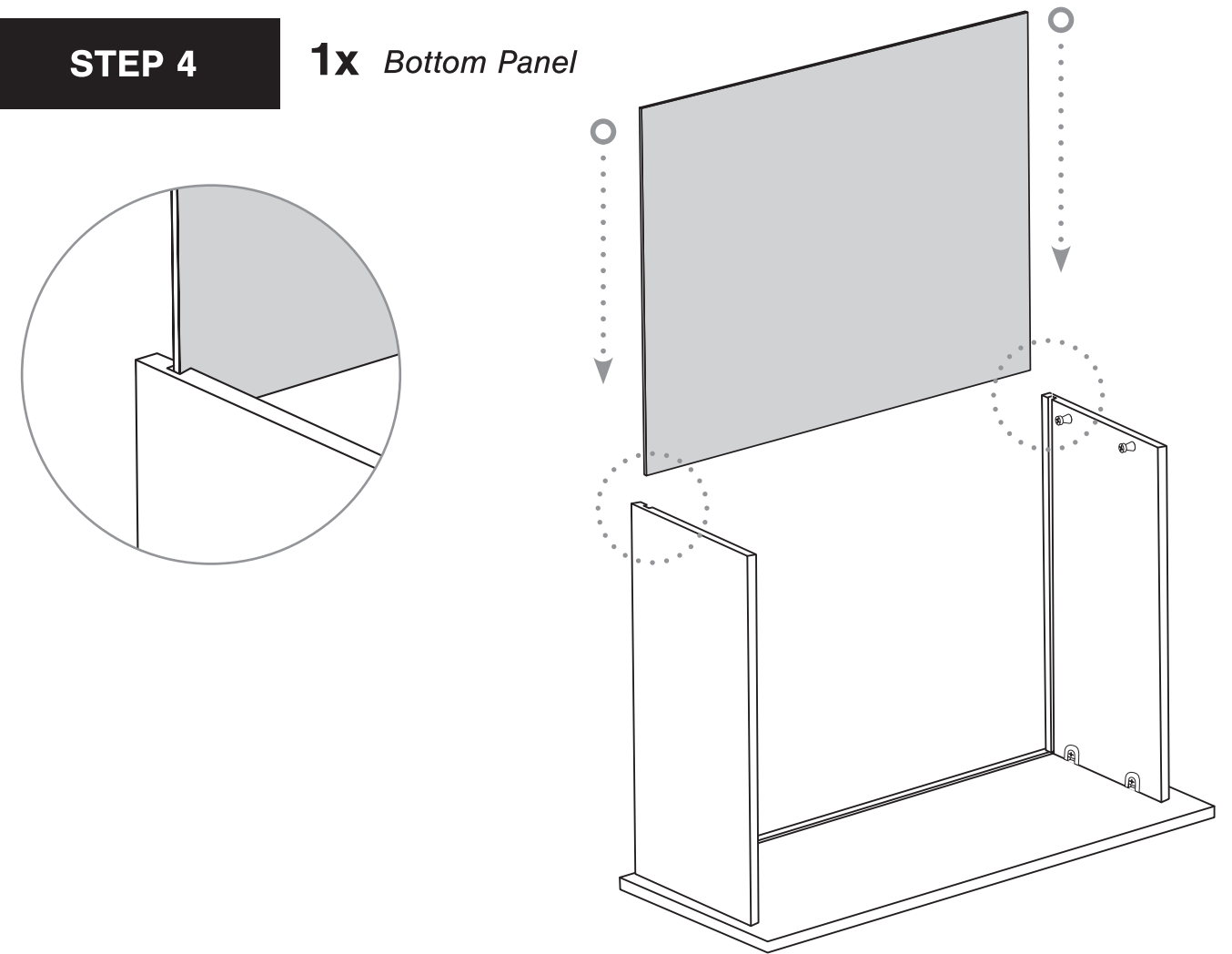
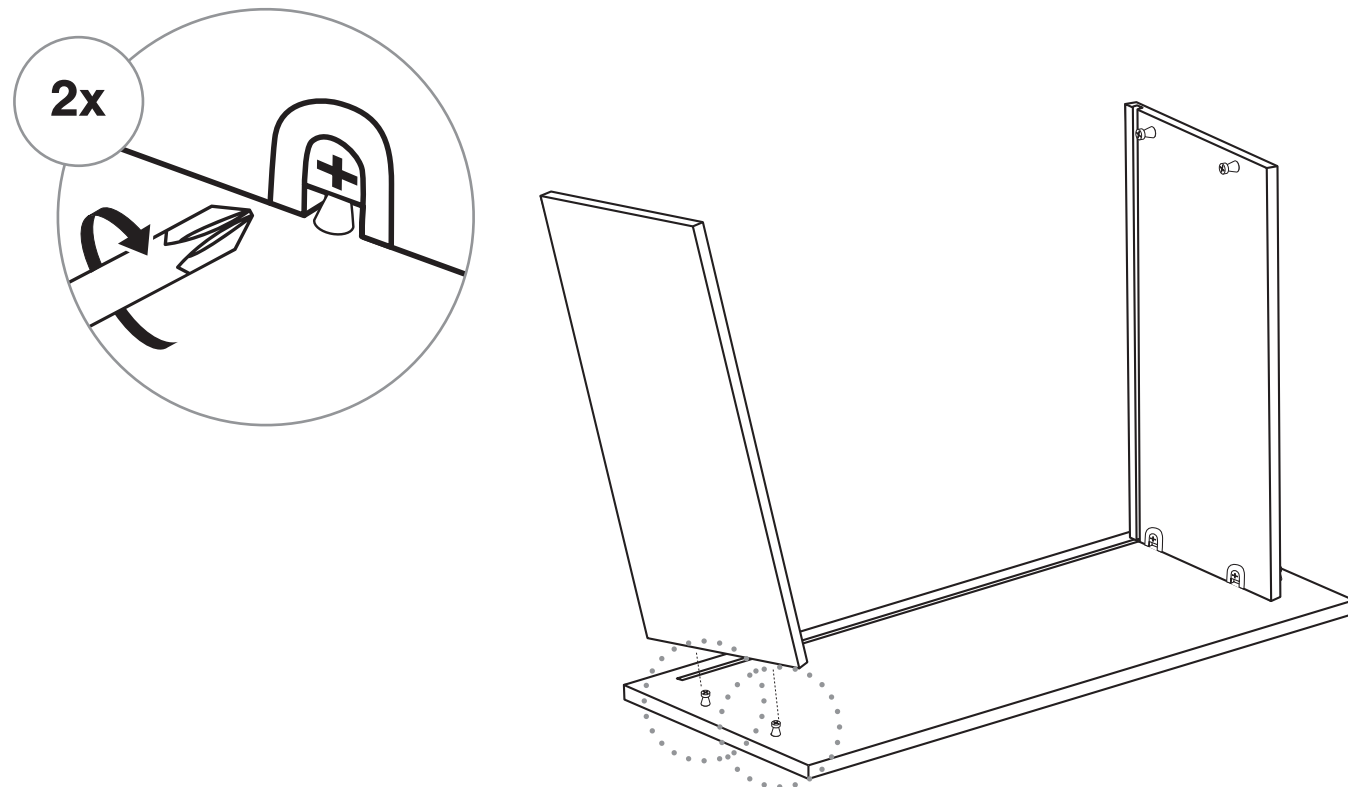
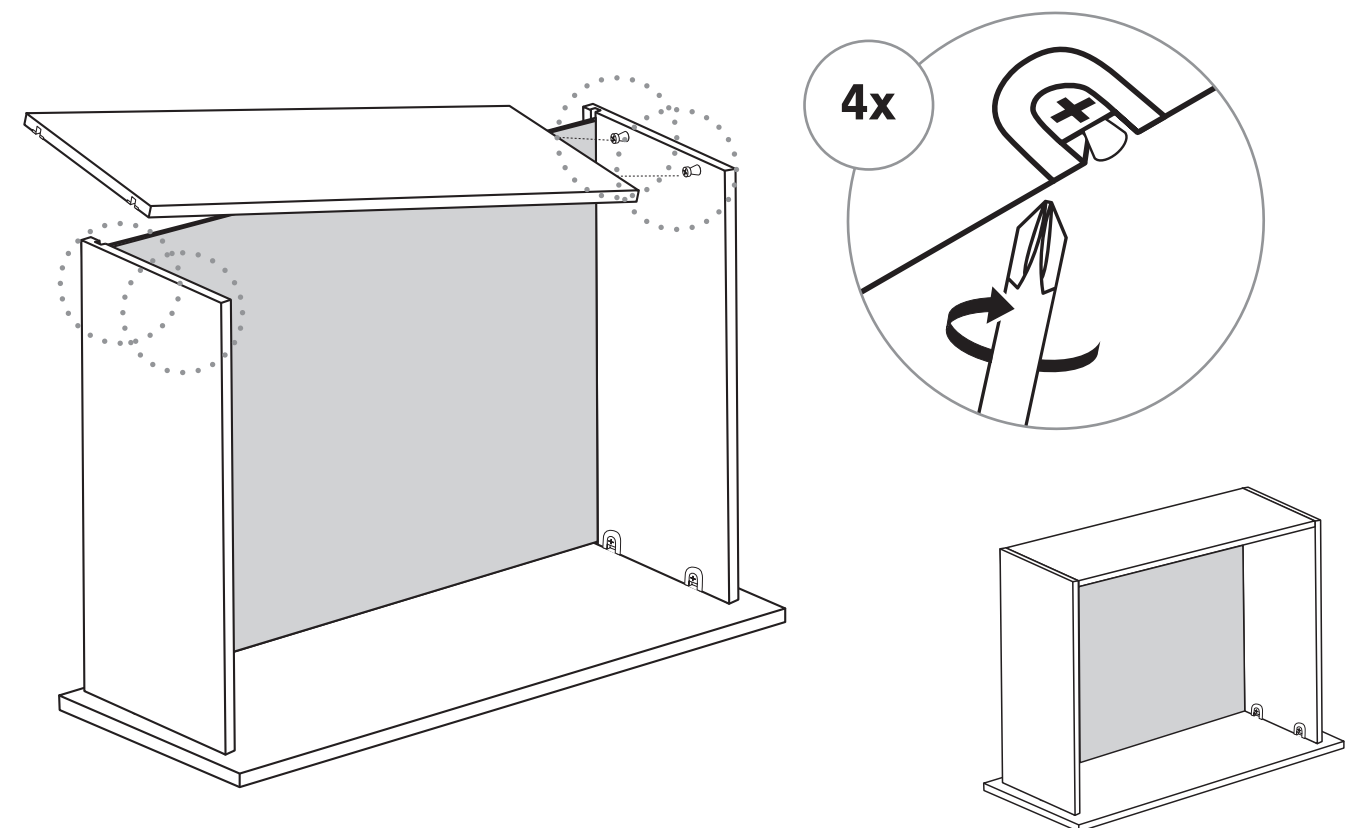
2x
Side Panels - Left & Right
- 

1x Bottom Panel
- 

2x
Cabinet and Drawer Runners - Left & Right

What you will need



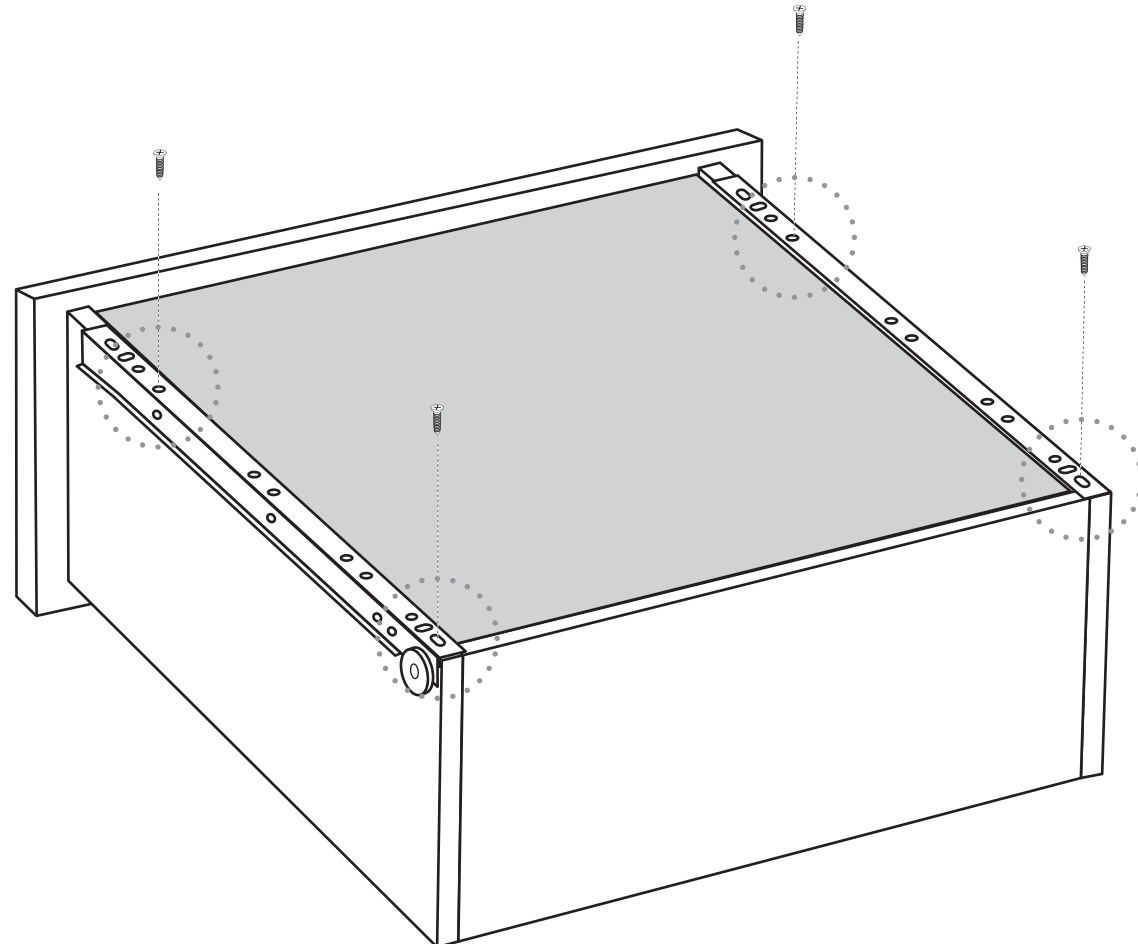
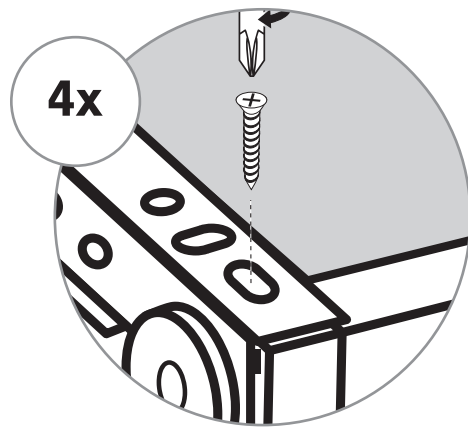
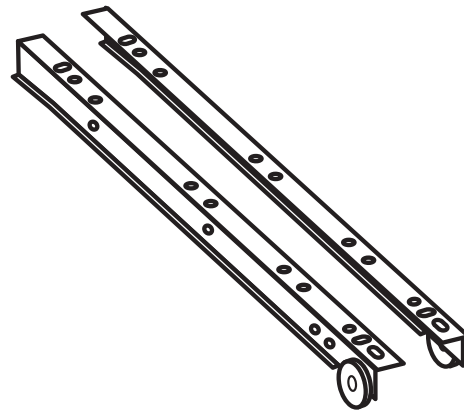
STEP 2**1x** *Right Side Panel***STEP 4****1x** *Bottom Panel***STEP 3****1x** *Left Side Panel***STEP 5****1x** *Back Panel*

STEP 6

2x Drawer Runners - Left & Right



4x



STEP 7

Use with STEP 1
Shell Assembly Instructions

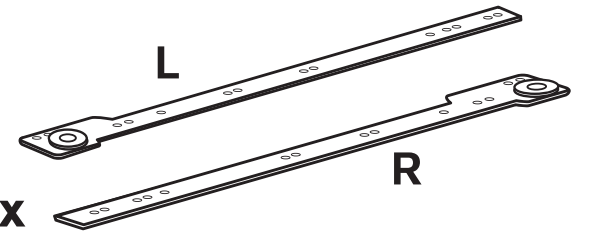


4x

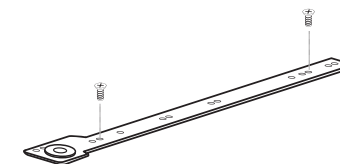
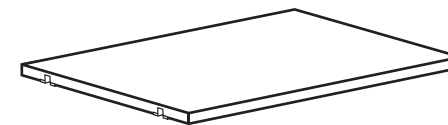
Euro Screw

2x

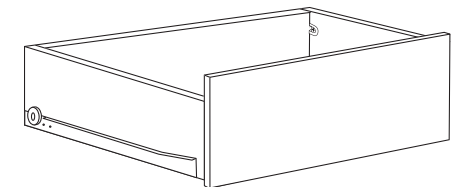
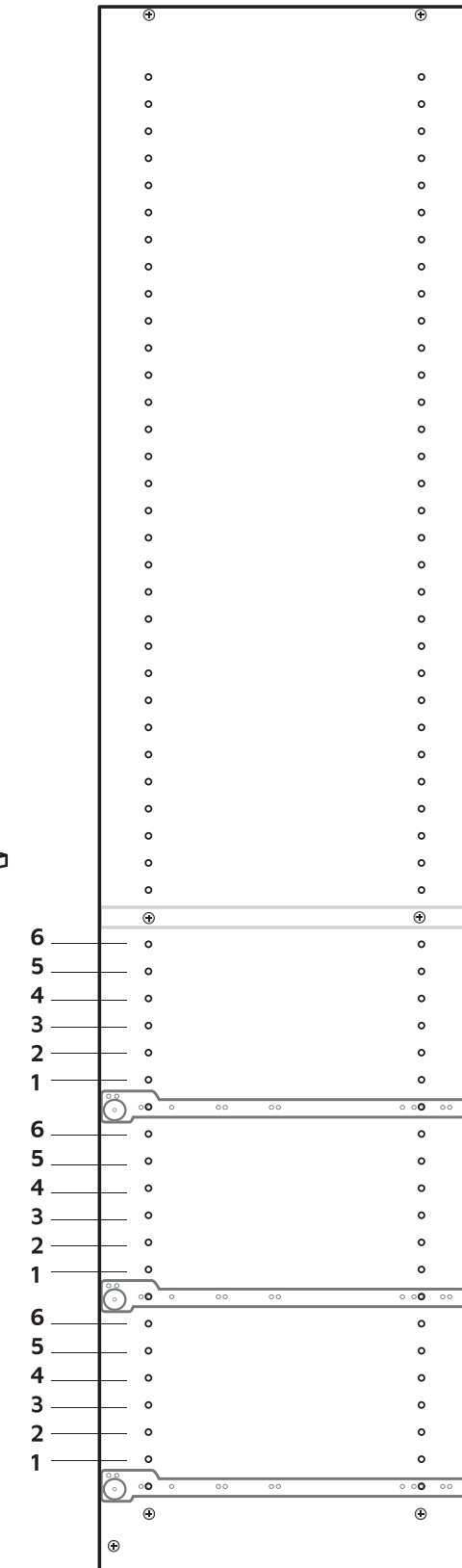
Cabinet Runners - Left & Right



Adjust shelf position to
fit above top drawer



Add Drawer Runners
for each drawer. Start
from the bottom and
work upwards.



Drawer
allow 6 hole space

LUGNA

FORM & FUNCTION

CABINET CARE INSTRUCTIONS

Everyday care for your cabinets:

Liquid spills should be cleaned up as they occur. Liquids and other damp objects, i.e. towels, will eventually cause permanent damage should they be left unattended.

Everyday clean-up of cabinets can be done with a damp cloth and a dry cloth. Ensure you use a clean cloth every time when wiping down your cabinets, as foreign dirt, grease, and oils may inadvertently be transferred to the surface.

Cleaning melamine products:

Oils, grease, and other soils that do not respond to water can be removed with a solution of mild soap and water. The surface should be rinsed immediately with a clean, damp cloth and dried thoroughly with a soft cloth to avoid streaking or moisture seeping into the seams around the edges.

PLEASE NOTE: Never use abrasive cleaners, ammonia, bleaching agents, scouring pads or powdered cleaners on any type of cabinetry.

Cleaning cabinet hardware:

Brass and Silver cleaners are not recommended for cleaning handles. Some of these cleaning solutions contain harsh chemicals that may damage the finish on your handles.

Wash your hardware with a solution of warm water and a small amount of mild dish detergent. Dry your hardware and areas around the cleaned area immediately.

Hinges can be cleaned with a dry cloth or cotton-tipped swab.